



Happy New Year from the Naperville Art League



[NAPERVILLE ART LEAGUE FULL WEBSITE](#)

[CLASSES](#)

[GALLERY](#)

[EVENTS](#)

[RIVERWALK FINE ART FAIR](#)

*Now accepting applications for the 2019 Riverwalk Fine Art Fair*

---

## PRESIDENTIAL MESSAGE

Happy New Year Artists!

We would like to wish all members a beautiful new year full of inspiration, friendship and success!

Thank you everyone who contributed to the League's end-of year fundraising appeal. If you wish to donate, it is never too late. Almost \$1,000 in donations will be designated primarily for classroom improvements and better basement storage systems. Also, a big thank you to those that volunteered at the 2018 Holiday Show. We really appreciated your help.

"Million Dreams" is our first member show in 2019 and prepare yourselves for this show's award ceremony on our well attended Fourth Friday social event which resumes on January 25<sup>th</sup>, 7:00 pm – 9:00 pm. Come and enjoy live music by "Ain't Dead Yet" band. We serve appetizers, and you can meet other artists and reconnect with old friends, too.

You talked, we listened. We will have a new binder, that will have the judge's comments. The judge will leave notes why and which artist deserved the prize that he/she chose as a winner for that show. You are welcome to read it and have a more in-depth understanding of the judge's picks. Please ask at the desk.

Several new classes were added to the winter and spring schedule. You can see them on our website here: [www.napervilleartleague.com](http://www.napervilleartleague.com).

On [www.calendarwiz.com/nal](http://www.calendarwiz.com/nal) you can see the schedule for classes as well, plus the exhibit themes for the whole year ahead.

Have a beautiful beginning of 2019!

Patricia Melekus □

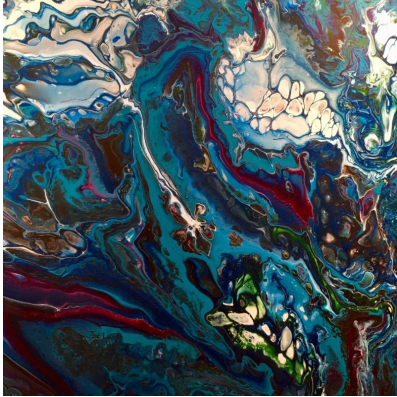
---

## January Exhibit: "Million Dreams"

Here are just a few of the amazing art pieces currently available in our gallery. Visit

[facebook](#) to view art from every artist currently on exhibit.





## GIFT CERTIFICATES AVAILABLE IN THE GALLERY

### UPCOMING EXHIBITS & EVENTS

#### ***Gallery Exhibits***

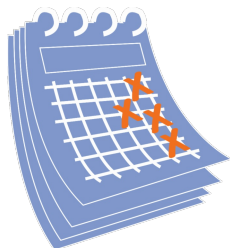
FEBRUARY: Our ever-popular ***Fabulous Fakes*** show returns. Member artists are invited to put a twist on famous, or maybe not so famous, art. A photo of the original is submitted along with the new art. Adhering to copyright rules is the responsibility of the artist. This show typically draws a lot of publicity.

MARCH: ***Heart of Gold***

#### ***Fourth Friday Reception and Party***

"Million Dreams" Friday, January 25th 7-9pm

"Fabulous Fakes" Friday, February 22nd 7-9pm



### EXHIBIT CALENDAR

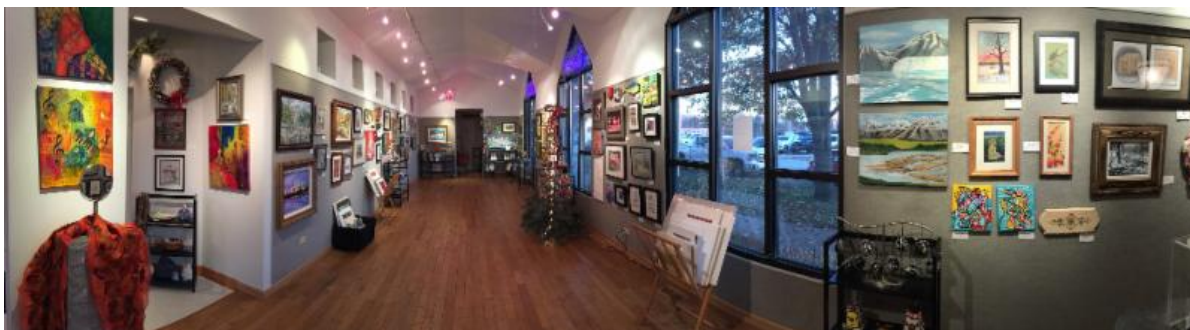
#### JANUARY

- 1/8 – 1/25 Million Dreams Exhibit
- 1/25 Fourth Friday Reception 7 to 9pm
- 1/25 – 1/26 Pick up/Drop off Fabulous Fakes
- 1/29 – 2/22 Fabulous Fakes Exhibit

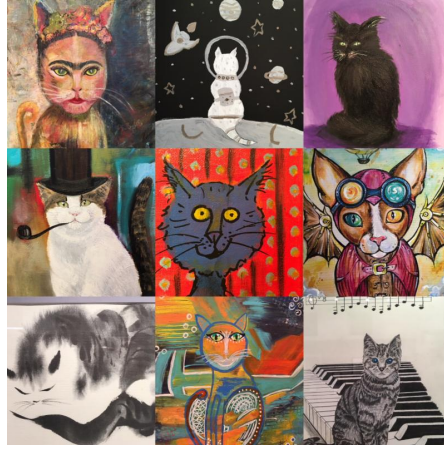
#### FEBRUARY

- 2/22 Fourth Friday Reception 7 to 9 pm
- 2/22 – 2/23 Pick up/drop off Heart of Gold

**RE M I N D E R :** Please pick up your work from the gallery after the monthly show. Work left for more than 10 NAL business days will be considered property of NAL.



## A LETTER OF THANKS FROM THE CAT GUARDIANS



"I just wanted to make sure you know how grateful we are to you for the opportunity to hold our event at NAL. We are a small shelter and rely on donations and fundraisers. This New Hope Art Auction has become one of our most important events in terms of outreach and fundraising. We could not do this without your generous donation of your space and time.

Thanks so much for all these years and your wonderful people who have worked with us on this event. It is a lot of work but I always look forward to the chance to meet new artists and people who care about our kitties.

Your art league is important in helping to bring together people who want to donate art and/or join us on auction day to bid on the many pieces of art we gather.

My deepest gratitude for another successful auction and hope to continue with what is now a January tradition for us.

Warm regards,  
Liz R."

## Real Surreal

### Who is eligible to enter?

Two 2D and two 3D categories are available:

- High school and college age
- Adults

### What is the deadline?

Entries must be received by  
4:00 pm, Saturday, March 2, 2019

### Is there an application fee?

Yes. The fee is \$25. Members of Naperville Art League \$15.

### Are there prizes?

Yes!

- Best of Show Award: \$350
- Awards of Excellence: \$100
- Honorable Mentions will receive a ribbon.
- All Award winners will be recognized in a press release and on the NAL website.

### When is the exhibit?

Entries will be exhibited at Naperville Fine Art Center & Gallery from March 19 through April 13, 2019 with an Artists' Reception and Award Ceremony on Sunday, **March 24, 2019 from 2:00 pm to 4:00 pm.**

NAL will host a food drive throughout the exhibit. Please consider donating canned and other non-perishable food.

## ENTRIES DUE BY

Wednesday, March 2, 2019

4:00 pm



## call for artists

Loaves & Fishes Community Services provides food and services to over 2,700 Naperville and DuPage County families each month, ensuring they have the nutrition necessary to reach their potential. In addition to food, the classes and programs offered to client families, through Loaves & Fishes' partnerships with area service providers, are designed to help clients improve their quality of life and regain their self-sufficiency.

For more information, visit [www.loaves-fishes.org](http://www.loaves-fishes.org), call 630.355.3663 or visit 1871 High Grove Ln., Naperville.



Naperville Art League is a non-profit organization created to support and sustain development and diversity of all forms of art. Through art education, programs, workshops and exhibits, NAL dedicates itself to providing art instruction as well as raising awareness and appreciation of the arts for the cultural enhancement of the community.

Become a member today!

Gallery Hours:

Tuesdays — Fridays: 10:00 am to 5:00 pm

Saturdays: 10:00 am to 4:00 pm



John Walker "A Man of Science" 2017

## Real Surreal



508 North Center Street | Naperville, IL 60563  
630.355.2530 | [www.napervilleartleague.com](http://www.napervilleartleague.com)



Gallery Administrative Associate job opening is in resume review.

RFAF 2019 Artist applications are being accepted via Zapp.

New website napervilleartleague.com is running smoothly.

Facebook and Instagram results have increased. Gallery and classes are being promoted heavily on social media.

Spring & Summer class schedules are being developed.

Public Art Competition information flyer is available.

A nominating committee is being formed for 2019-2020 Board positions.

Building light bulbs and fixtures are being addressed.

---

## **-MEMBER NEWS-**

### **NEW MEMBERS DECEMBER**

*Welcome!*

Aubrey Archer  
Ryan McKenna  
Barb Plichta

### **NOVEMBER - DECEMBER ART SALES**

*Congratulations to all the artists who sold art during November & December 2018!*

C Banks  
Maritza Bermudez  
Cynthia Boudreau  
Christine Cintula  
Hedy Dawson  
Barbara Elsenheimer  
Elena Fazio  
Margie Fazio  
Debbie Hart  
Jennifer Hauser  
Shannon Johnson  
Marianne Lisson Kuhn  
Linda Kurcz  
Roxanne Lang  
Valerie Lorimer  
Maureen McKee  
Patricia Melekus  
Natalie Mouw  
Patricia Mrocza  
Marilyn Polivka  
Madhu Prakash  
Rashmi Ranganath  
Vera Shomshin  
Paula Shuck  
Renee Stukel  
Marlene Vitek  
Jo Volkening  
Shruti Warekar  
Sylvia Wuensche-Wienands

---

*Do you have news to share? Send your info to [naperartleague@aol.com](mailto:naperartleague@aol.com)*

---



**INSTRUCTORS**



**ADULT** 16+  
**CLASSES**



**KIDS** Pre K-Teens  
**CLASSES**

**CLASS CALENDAR HERE**

View our wide selection of art classes for adults and children. Winter and Spring schedules now available. Register for NAL classes by calling 630-355-2530.

- What will you do to make 2019 your best year ever?
- Will you challenge yourself?
- Will you inspire others?
- Will you have new experiences?
- Will you feel more fulfilled?
- Will you meet new people?
- Will you learn something new?
- Will you push yourself to succeed?

There is a saying that I love . . . *"When the student is ready the teacher will appear."* I believe that saying is true. It happened to me about 25 years ago when I met my first painting instructor. I was ready to learn something new, and I certainly did. Learning to paint was the best gift I could have given myself. It opened doors for me that I didn't even know were there, and I've enjoyed every minute. Why not give yourself the gift of creativity this year. Sign up for a class, try something new or revisit a forgotten skill. Just do it. It could be the best decision you could make for yourself. Make 2019 the Year of Creativity! Our teachers are waiting . . .

-Sherry DeFillippo, Director of Education

WINTER CLASSES

SPRING CLASSES

**Follow Us on Social Media**



*We are on Facebook & Instagram*

You can help the League advertise for FREE by simply following us on our social media pages and "liking" or "sharing" our posts. The more you interact with us, the more our pages are seen by your friends and new faces.

"Check In" or "Tag" us in art-related posts and we'll do our best to share it on the League page.



**DONATIONS APPRECIATED:** Please consider Naperville Art League, a 501c 3 non-profit, in your giving.

**ANNUAL APPEAL:** Thank you for your generosity. Please send in your annual donation to 508 Center Street, Naperville, IL 60563.  
[DONATION FORM](#)



**OFF-SITE EXHIBITS:** To learn more about participating, contact Naperville Art League's front desk.

**SHARE YOUR ART NEWS:** Send your information: [naperartleague@aol.com](mailto:naperartleague@aol.com)

---

## BOARD MEMBERS

**President:** Patricia Melekus  
**Director of Exhibits:** Patricia Nunez-Velderrain  
**Dir. of Marketing & Communications:** OPEN  
**Director of Programs & Hospitality:** June Padovani  
**Director of Education:** Sherry DeFillippo  
**Director of Member Services:** OPEN  
**Director of Building & Grounds:** Larry Gryziak  
**Director of Development:** Chris Hughes  
**Secretary:** Sally Sharp  
**Treasurer:** OPEN  
**Board Member-at-Large:** Linda VanderKolk  
**Executive Director:** Christine Banks  
**RFAF Director:** Debbie Venezia  
**Receptionist/Off-Site Exhibits:** Ariana Poe

## INTERESTED IN SERVING?

Three NAL Board positions available:  
*Director of Member Services* has the fun role of welcoming new members .  
*Treasurer* requires someone with appropriate background.  
*Director of Marketing & Communications* works closely with the Executive Director and Board to promote and inform.

To learn more contact Patricia Melekus, President.

**NEXT BOARD MEETING: February 5 @ 6:30pm**

---

*Did you miss us last month?* **DECEMBER NEWSLETTER**



Happy Holidays from the Naperville Art League



From all of us at the Naperville Art League, we wish you and yours a safe and happy holiday season!

NAPERVILLE ART LEAGUE FULL WEBSITE

CLASSES

GALLERY

EVENTS

RIVERWALK FINE ART FAIR

*Now accepting applications for the 2019 Riverwalk Fine Art Fair*

**MERRY CHRISTMAS**



## OUR MISSION

The Naperville Art League (NAL) provides art instruction and education, encourages interest in all forms of creativity and stimulates understanding and appreciation of art in the community. We are a not-for-profit, volunteer-based organization sponsored by our membership, dedicated to promoting and supporting the visual arts and artists in Naperville and across the country.



Just a reminder: you are receiving this email because you have expressed an interest in the Naperville Art League. Please add [naperartleague@aol.com](mailto:naperartleague@aol.com) to your address book so that our mailings will reach your inbox! If you wish to be removed from our mailing, click here: [Unsubscribe](#).

## GALLERY HOURS

10am to 5pm Tuesday thru Friday  
10am to 4pm Saturday  
Closed Sunday & Monday



## SPONSORS OF THE NAPERVILLE ART LEAGUE



**After Hours Film Society**  
Post Office Box 5266  
Wheaton, IL 60189  
630.534.4528  
Info@Afterhoursfilmsociety.com

**Naperville Bank & Trust**  
555 Fort Hill Drive  
Naperville, IL 60540  
630.369.3555  
www.banknaperville.com

**ClaySpace Ceramics Arts Center**  
740 Front Street  
Lisle, IL 60532  
630.393.2529  
www.ClaySpace.net

**Art & Frame Naperville**  
115 East Ogden #115  
Naperville, IL 60563  
630.355.0703  
info@artandframenaperville.com

**THANK YOU!**

**Lewis University**  
1 University Pkwy  
Romeoville, IL 60446  
815.838.0500  
www.lewisu.edu